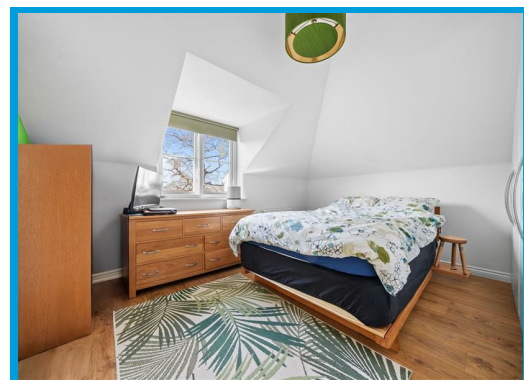
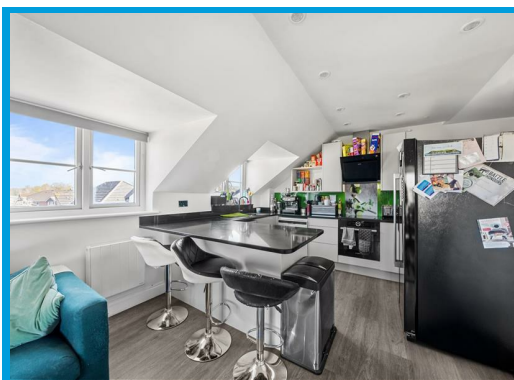
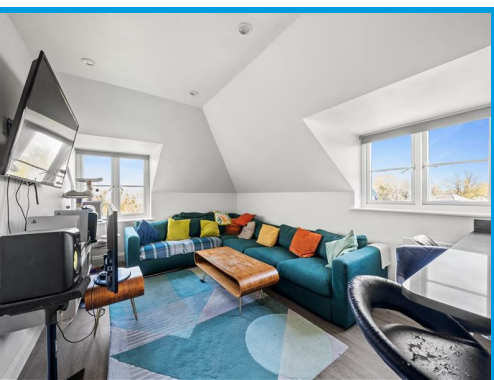




School Meadow, Guildford, GU2 8GY

Offers In Excess Of £250,000

Located at the end of a quiet cul de sac, this modern two double bedroom apartment offers spacious accommodation within easy access of Royal Surrey Hospital, the A3 & Surrey Research Park and the benefit of allocated street parking.



Description

A beautifully presented two-bedroom apartment ideally situated in a quiet and well-maintained residential development in the heart of Guildford. Perfect for first-time buyers, professionals, or investors, this stylish property offers both comfort and convenience.

The apartment features a bright and spacious open-plan living and dining area, complemented by a modern fitted kitchen. Both bedrooms are generously sized, with the main bedroom benefiting from built-in wardrobes. A sleek family bathroom completes the accommodation.

Additional benefits include allocated parking, well-kept communal gardens, and easy access to local amenities, excellent schools, and transport links—including Guildford town centre and mainline train station, just a short drive or bus ride away.

Don't miss the opportunity to view this charming home in a highly desirable location.



Total area: approx. 57.4 sq. metres (617.7 sq. feet)

